



This deceptively simple courtyard provides for many needs. Without too much adornment, it becomes a place where students can feel safe as they sit to eat or chat. No seat walls are higher than nineteen inches. All trees are limbed just above average eye-level.

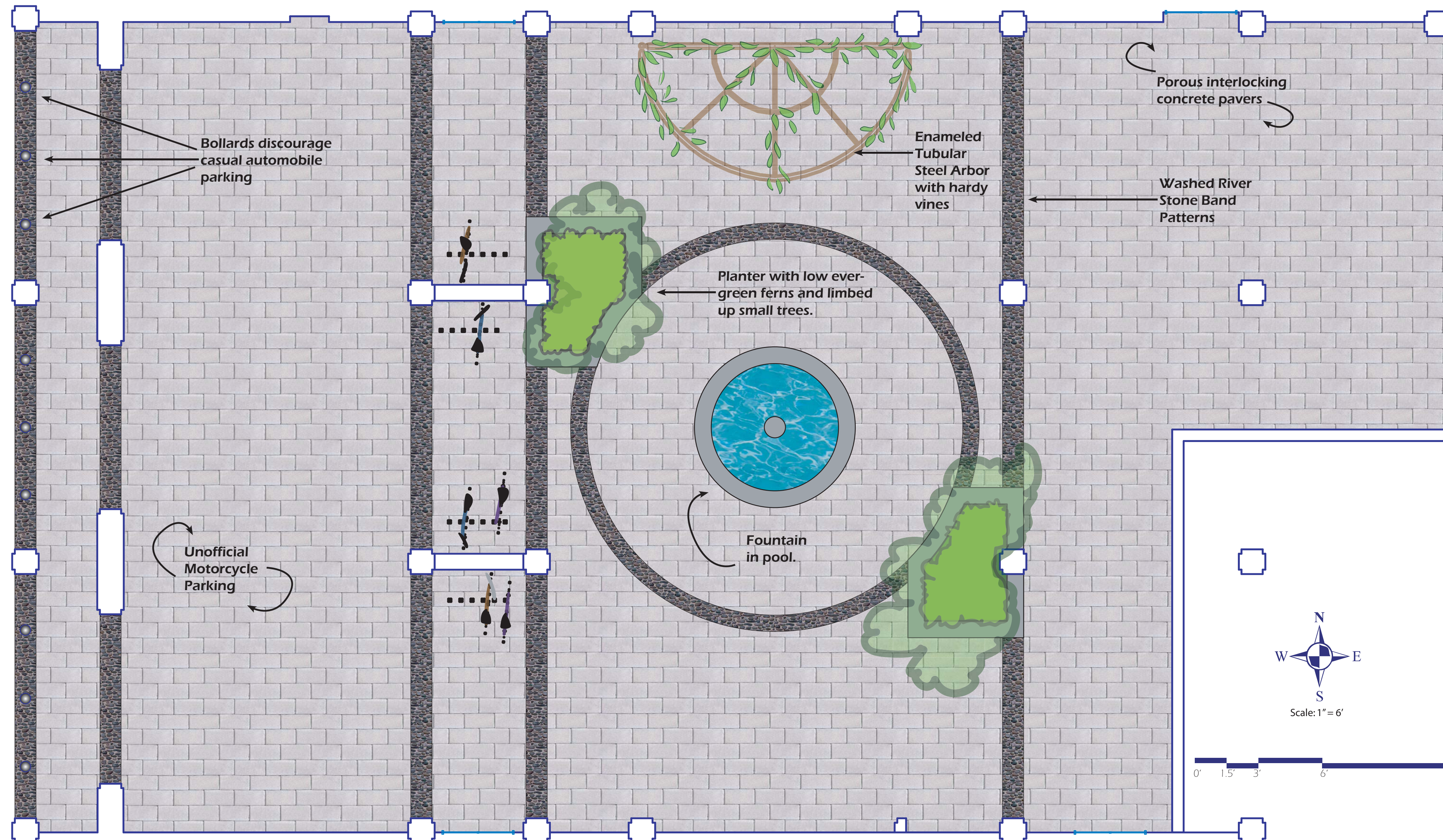
Day or night, rain or shine, social functions for up to 250 people are easily accommodated. A tubular steel enameled arbor becomes a focal point for a temporary podium. The courtyard may be easily filled with chairs, and the fountain can be turned off.

On a typical day, normal through-traffic is not impeded. The only change in traffic may be that some will prefer to linger just a little to take in the inviting surroundings. Tables and chairs suitable to this venue could be randomly placed for people to use as they please.



The pavement will be porous interlocking cement pavers that will run on top of enhanced drainage. This will benefit the planters. The tree planters will have no bottoms, but instead will be directly connected to the ground conforming with modern horticultural

procedures to promote better plant growth. Cement pavers are cross-sectioned by stone bands running east-west to define entry too and from the courtyard area. Bollards restrict vehicular traffic without hindering the occasional motorcyclist and bicyclists.



Perspective renderings: The top left is looking north through the center of the courtyard and up the stairs to the quad. The top right is looking north-west from the side closest to the student break room. The rendering directly above affords a view from the terrace above. The view below is looking south towards Caldwell Hall.

